

ASCEND



COLOR
GRADING
CENTRAL™

ASCEND
LUT PACKAGE

1. ASCEND LUTs

Thank you purchasing the ASCEND LUTs package! This guide was created to assist you with applying ASCEND for the best results. We have detailed a suggested workflow as well as provided some suggestions on what LUTs to apply to different contexts and genres WITH thumbnail examples.

2. WORKFLOW SUGGESTIONS

Ascend LUTs are creative LUTs, meaning that they are intended to be applied to footage that already has a solid foundation. If you are shooting Log footage, you will need to set that foundation before applying Ascend LUTs to get the most out of them. The workflow we recommend is as follows:

1) Apply a base correction

Give your Ascend LUTs a solid base correction by correcting for contrast and saturation before applying the LUT. Images that have a high dynamic range and also retain information in the brightest highlights and darkest shadows will perform the best.

2) Apply the Ascend LUT

3) Correct any exposure issues

Some LUTs may cause issues with overexposure, or unwanted color casts. Go back to your base correction and make adjustments as needed.

4) Fine-tune the LUT

In many instances, the correction that the LUT applies may be too strong. Use your software's controls to dial the correction to your taste. Depending on the software, these controls may be called things like Opacity, Mix, Key Output or Intensity.

3. CHOOSING THE RIGHT LUT

With 30 different LUTs to choose from, it may be difficult to decide which look to use. As you experiment with Ascend, keep one major thing in mind:

- Context
Make sure that you keep context in mind as you apply the LUTs. Does your shot need to support the emotion of the scene? Are you trying to emulate the look of a genre, or emulate a look that your client has in mind?

Use the Ascend LUT guide

The following guide aims to give you some inspiration for a variety of different projects. Look options will be provided for the following genres:

- Adventure
- Classic
- Fashion/Music Video
- General Enhancement
- Intense/Bleak
- Miscellaneous Effects
- Spy/SciFi/Thriller
- Vintage

ADVENTURE



Original



Cubanismo



Mint



Ochre



Super

CLASSIC



Original



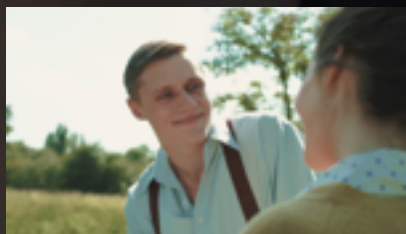
3Strip



70's



80's



Brooklyn



Chamoisee



Newspaper



Tritone

FASHION/MUSIC VIDEO



Original



Brooklyn



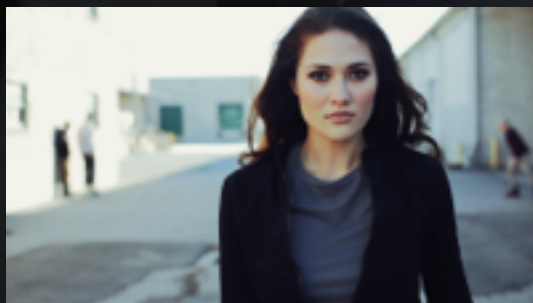
Celadon



Emulsion



Fashion



Mint



Schauss

GENERAL ENHANCEMENT



Original



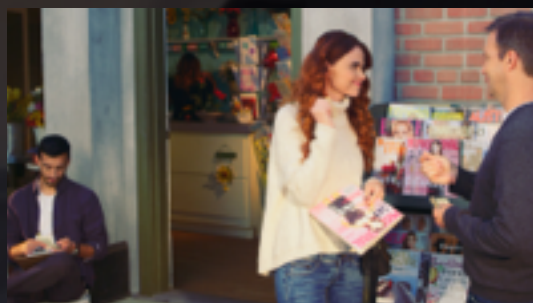
3Strip



Enhance



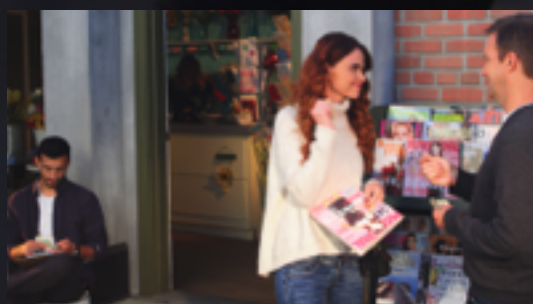
Enhance 60%



Rhythm



Super



Tritone 50%

INTENSE/BLEAK



Original



Bleach



Café Au Lait



Grime



Grit

MISCELLANEOUS EFFECTS



Original



B+W



Duotone



Unitone

SPY/SCI-FI/THRILLER



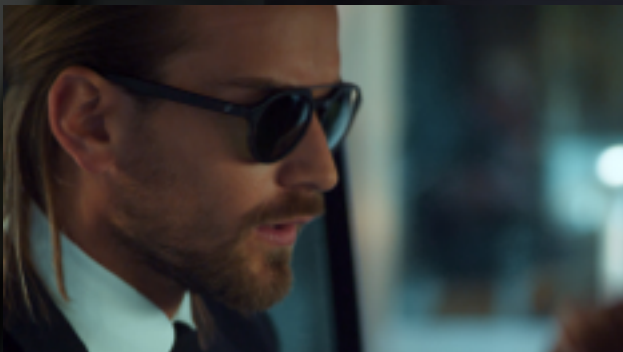
Original



Celadon



Glacier



Spy



Thriller

VINTAGE



Original



70's



Café Au Lait



Summer



Vinteo